



Welcome to Toronto PLUG

Presented by: Schneider Electric and Langford & Associates
October 2017

Schneider Electric Canada, the Specialist in Energy Management and Automation

More than **35** sites

2,900+
Employees in Canada

4.2 Million
Hours accident free

450
engineers and technicians in R&D

Giving back to the community

24h Tremblant

6 years of engagement



Habitat for Humanity

Over 10 years of sponsorship building affordable housing and promoting homeownership



OneWalk to Conquer ALL Cancers

12 years of engagement



5 Global Research and Development Sites

Marconi (Montreal, QC)

Small Building Systems center

Victoria (Victoria, BC)

Global R&D center for Power measurement & monitoring

Burnaby (Burnaby, BC)

Site dedicated to Solar Inverters

Calgary (Calgary, AB)

Customized Engineered Solutions for truck and rail terminal automation management and rotating equipment

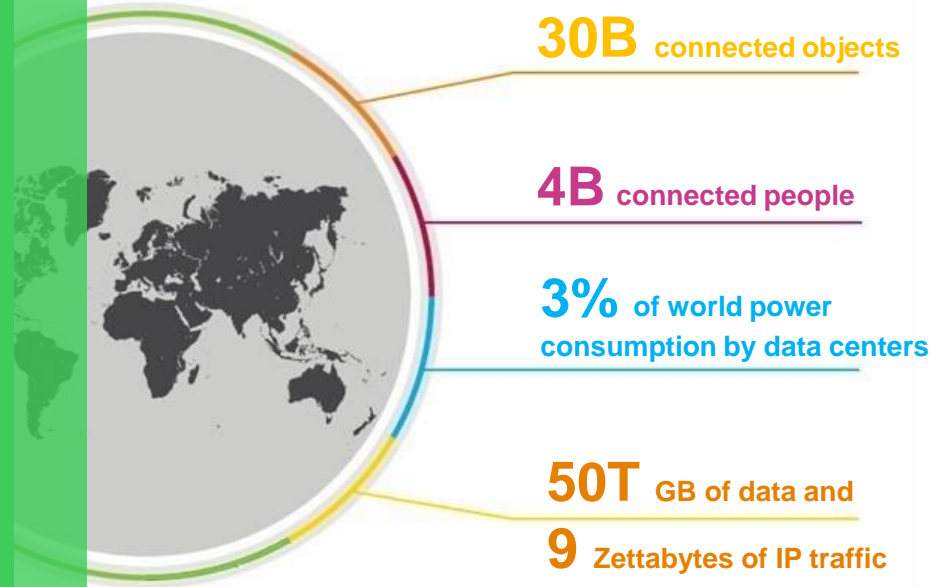
Kanata (Ottawa, ON)

Telemetry Controls and Instrumentation center

By 2020, the world will be a different place...

...it is undergoing profound transformation to support the enormous data volumes and processing demands that are being generated by the Internet of Things (IoT).

The world in 2020...



Sources: Gartner, IDC, Uptime Institute, Cisco

We started EcoStruxure in 2007,
and have stayed ahead of the IoT space evolutions



MOBILITY



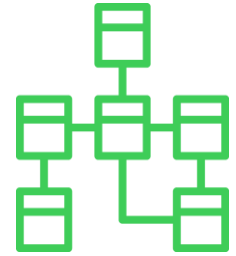
CLOUD



SENSING



ANALYTICS

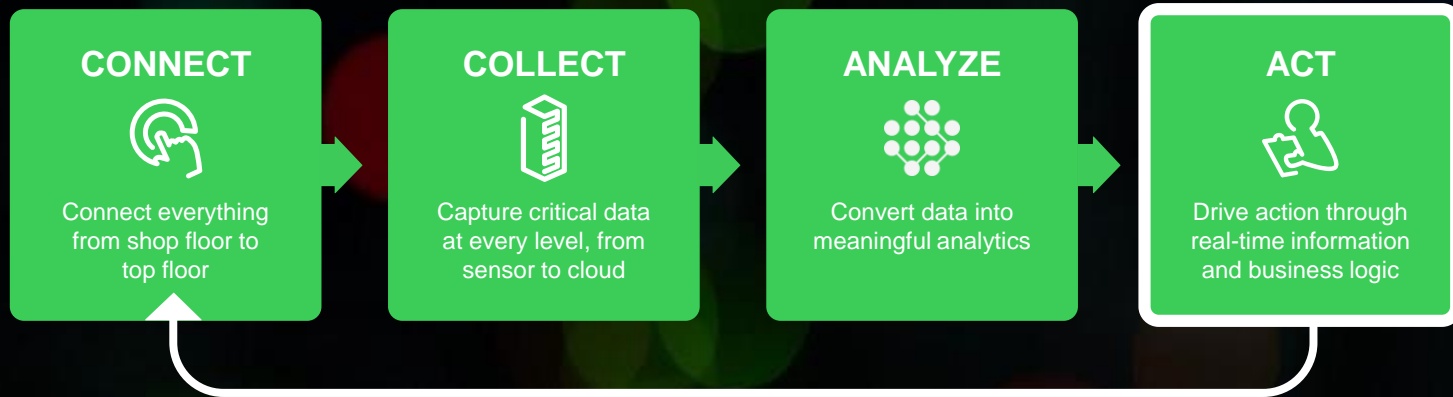


CYBER SECURITY

450,000 EcoStruxure systems have been deployed both in
direct and with the support of our 9,000 system integrators

EcoStruxure bridges the IT/OT gap

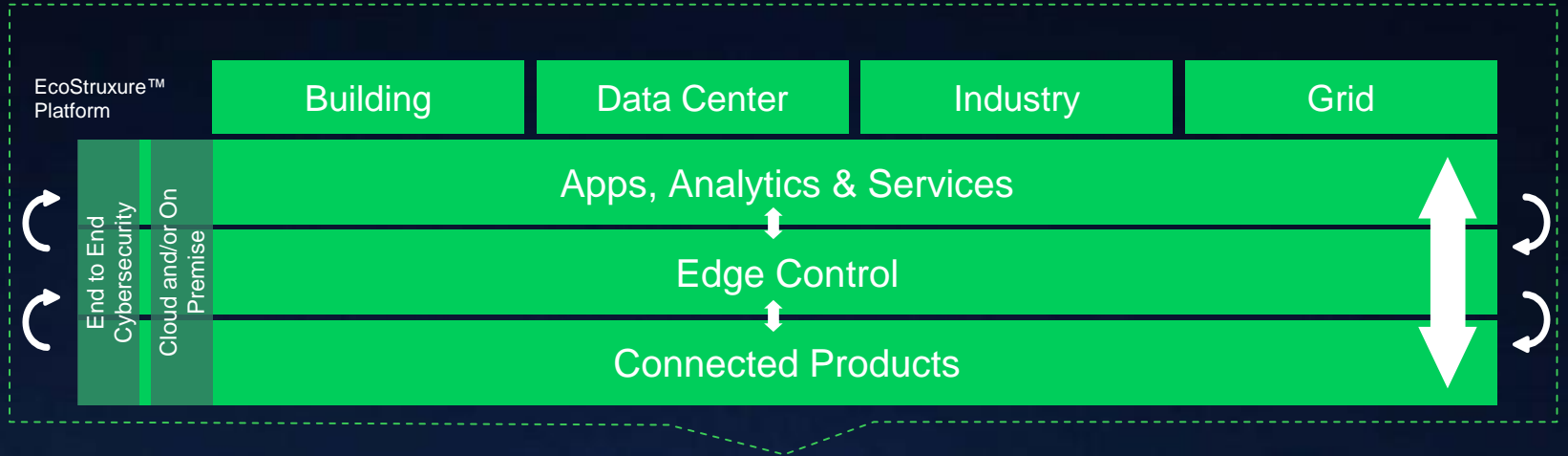
Translating data into actionable intelligence and better (actionable) business decisions



EcoStruxure is an open, inter-operable system of architectures

EcoStruxure™

Innovation At Every Level



EcoStruxure™
Building

EcoStruxure™
Power

EcoStruxure™
Datacenter

EcoStruxure™
Machine

EcoStruxure™
Plant

EcoStruxure™
Grid

EcoStruxure™ Power

Innovation At Every Level

Safety

Protection | Regulatory

Availability

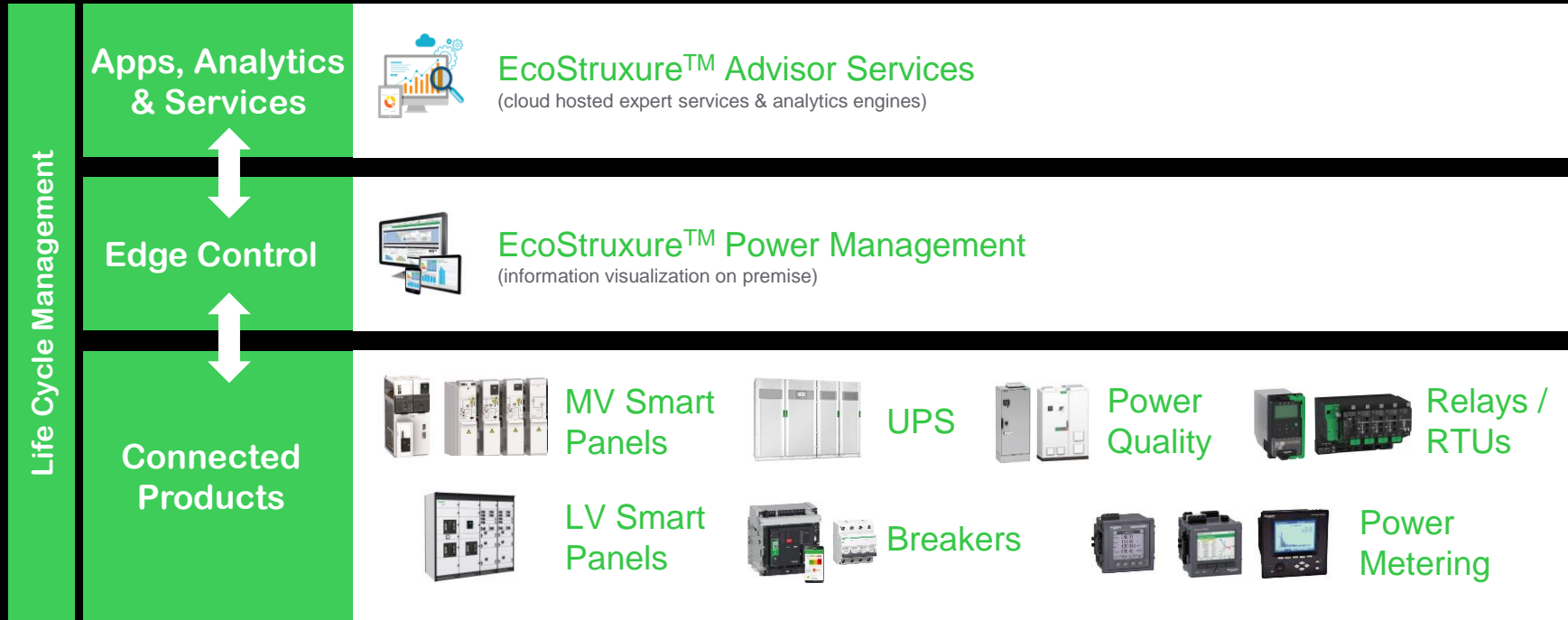
Downtime | Recovery

Efficiency

Maintenance | Energy



Best in class products & services are the digital backbone for electrical distribution



Secure | Open | Scalable | Flexible | Future Proofed

Life Is On



Schneider
Electric

