

# Tenant and Revenue metering

Things to watch  
for in



Make the most  
of  
your energy<sup>SM</sup>  
**Schneider**  
Electric

October 2008  
Canadian User's Conference

# The True Cost of Your Utilities

- Utility costs can exceed 30 percent of your overall operating expenses
- Energy is one of the most easily controlled expenses in your organization
- Studies continue to document the link between utility conservation and separate billing for utility usage.

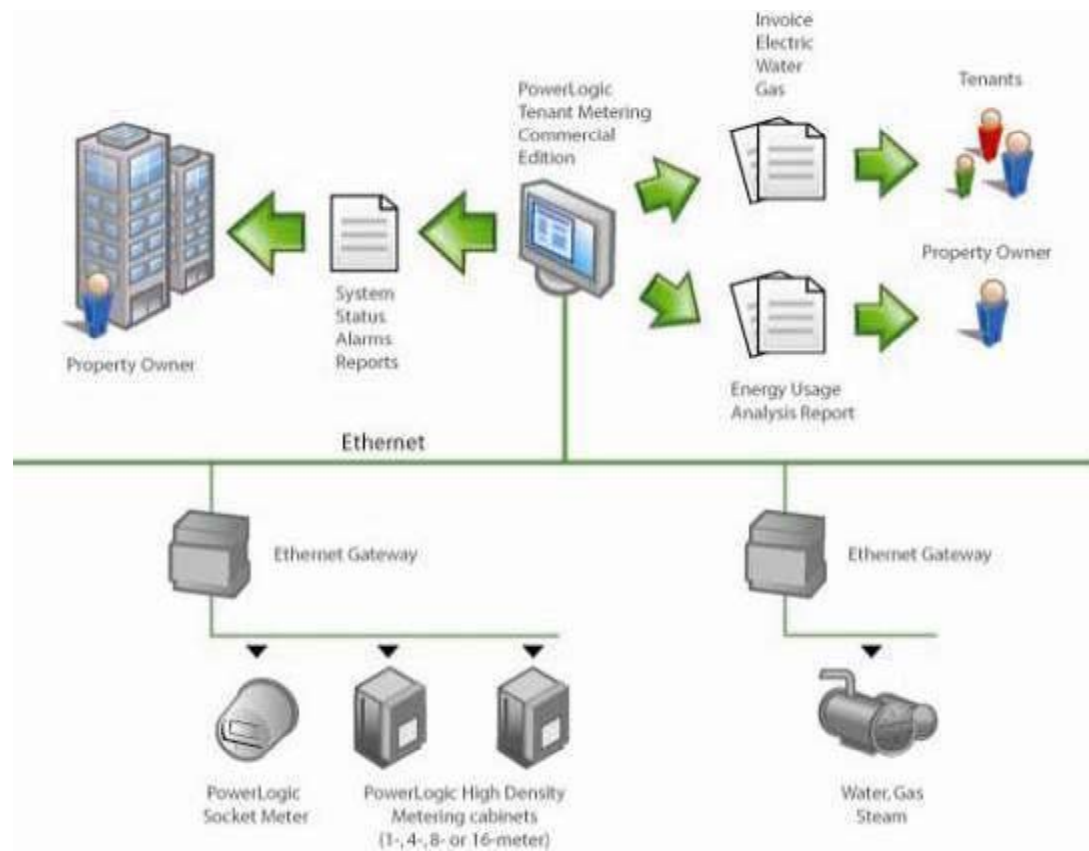


# Submetering in Ontario

- *Electricity Act & the Ontario Energy Board Act (August 1, 2007)*
  - Allows for individual metering of condominium units, through local distribution or third party companies.
  - Why? When consumers are required to pay for the electricity they actually use, overall consumption goes down by as much as **25%**.
- **Ontario Statistics**
  - 28.8% of all Ontario households are renters (1.3 million tenant households). Almost 50% of City of Toronto households are renters
  - 40% live in apartment buildings with five or more stories. 60% for Toronto
  - Around 85% of multi-unit apartments & condo buildings are “bulk metered”
- **LEED 2009 provides up to 5 points for submetering.**

# A Complete Solution ... PowerLogic Submetering Solutions

Whether you need a complete billing solution for new construction or a billing solution that easily integrates with your existing infrastructure — PowerLogic submetering fits the bill.



# PowerLogic ION Meters

Measurement Canada Certified for Billing



# PowerLogic Submetering Hardware Overview

- High Density Metering enclosures
  - 8 & 16 meter enclosures
  - 1 & 4 meter enclosures
- E4800 Multi-Circuit Meter
  - Field configurable, 24 current inputs, single & three phase
  - Flexible CT options: 5A, 80mA & 330mV
  - Ethernet & phone modem communications
  - On-board data storage (up to 2 years)
- Socket meter
  - ION 6300



# High Density Metering - 1 Meter

- Available with PM810, PM820, PM850 or ION6200
- Revenue Canada sealable with ION 6200
- Enclosure type options
  - Indoor, Type 1 (clear viewing window)
  - Outdoor, Type 3R (no window)
- Applications
  - 1-phase or 3-phase
  - 120/208V, 240V, 277/480V, 480V\*, 347/600V\*, 600V\*
- Minimal wall space required
  - 11.3”h x 7.2”w x 7.4”d (Type 1)
- UL 508a & UL 50 certified

\* Requires CPT included in enclosure (option 4T)



# High Density Metering - 4 Meters

- Available with PM810, PM820, PM850 or ION6200
- Revenue Canada sealable with ION 6200
- Indoor (Type 1) & outdoor (Type 3R) versions
- Applications
  - 1-phase or 3-phase
  - 120/208V, 240V, 277/480V, 480V\*, 347/600V\*, 600V\*
- Includes voltage disconnect switch (non-fused)
- Minimal wall space required
  - 30.6”h x 7.2”w x 7.4”d
- UL 508a & UL 50 certified



\* Requires CPT included in enclosure (option 4T)



# PowerLogic E4800 Multi-Circuit Meter

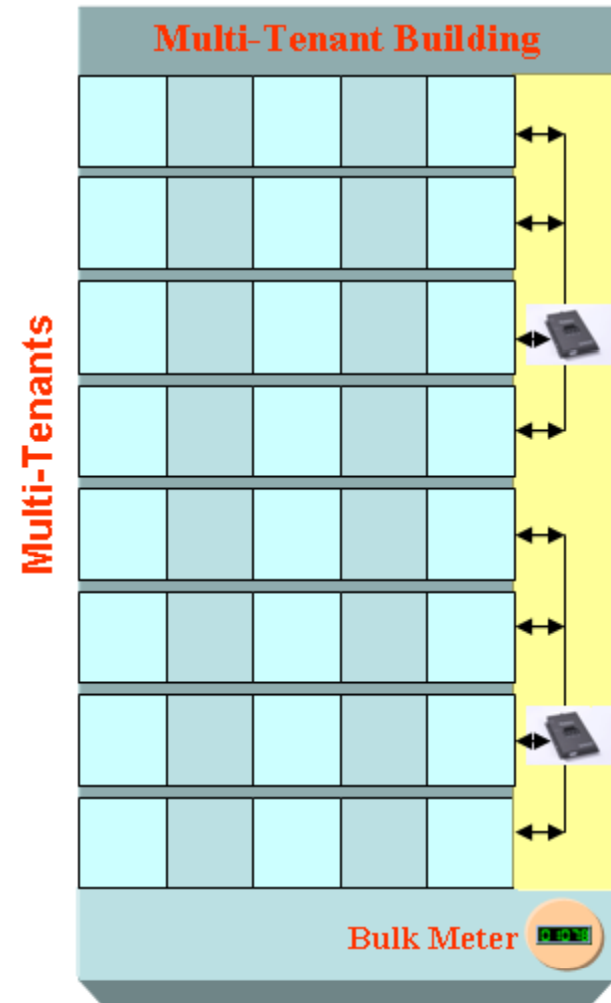
- Very flexible high-density meter for single and three phase circuits
- Applications:
  - Single phase: 20 single phase circuits
  - Three phase: 10 - 3CT circuits (wye)
- Accuracy: 0.5% (including CTs)
- Measurements:
  - Real, reactive & apparent power & energy
  - Power demand
  - Power factor
  - Voltage & current per phase
- Voltage inputs:
  - Single Phase 120/240V, 120/208V
  - Three Phase 247V / 480V / 600V
- Current inputs:
  - 80mA, 5A or 333mV\*
- On-board data logging (up to 2 years)
- Communications: Ethernet and Modem
- Real-time data via HTTP and ModbusTCP/IP
- Dimensions:
  - 80mA & 333mV: 13.1"h x 11.8"w x 2" d
  - 5A: 13.1"h x 17"w x 2"d
- Revenue Canada Approval pending

\* 333mV CTs are not revenue grade (1% typical)

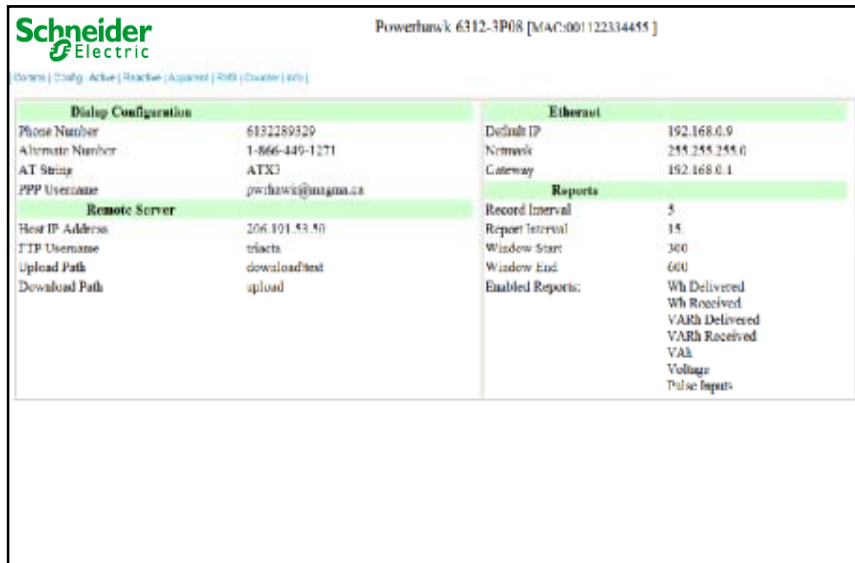


# PowerLogic E4800 Multi-Circuit Meter

- **Easy Installation:**
  - Each metering device (up to 20 meters in one device) uses less wall space than a clipboard
  - Suitable for both retrofit and new construction applications
  - Can be easily installed by a single technician



# E4800 Multi-Circuit Meter Web Pages



The screenshot displays the web interface for a Schneider Electric Powerhawk 6312-3P08 meter. The interface is organized into several sections: 'Dialup Configuration', 'Ethernet', 'Remote Server', and 'Reports'. Each section contains specific configuration parameters and their values.

Dialup Configuration		Ethernet	
Phone Number	6132289329	Default IP	192.168.0.9
Alternate Number	1-866-449-1271	Netmask	255.255.255.0
AT String	ATX3	Gateway	192.168.0.1
PPP Username	powerhawk@nigma.ca	<b>Reports</b>	
Remote Server		Record Interval	5
Host IP Address	206.101.53.50	Report Interval	15
FTP Username	triacts	Window Start	300
Upload Path	download/test	Window End	600
Download Path	upload	Enabled Reports:	Wh Delivered Wh Received VARh Delivered VARh Received VAh Voltage Pulse Inputs

- Meters provide web interface to access real-time values & status information
- Very comprehensive & easy to use

# Panelboard Integrated Metering

- Meters & CTs will be factory mounted & pre-wired in I-Line panelboards
- Panels will be offered in specific sizes
  - 8, 12, 16, 24 circuits
  - Custom panels available
- Coming 1Q 2009



# PowerLogic ION 6300 Socket Meter

- S-base meters

- Forms: 12S, 16S, 9S, 36S, & 45S

- Accuracy: 0.2%

- Measurements

- Real energy
- Per phase voltage & current, plus magnitudes & angles

- Communications

- RS485 Modbus interface for communications.

- Inputs / Outputs

- 120 to 480V auto-ranging
- Self-contained: up to 200A
- Transformer rated: up to 20A



# PowerLogic Tenant Metering Software Overview

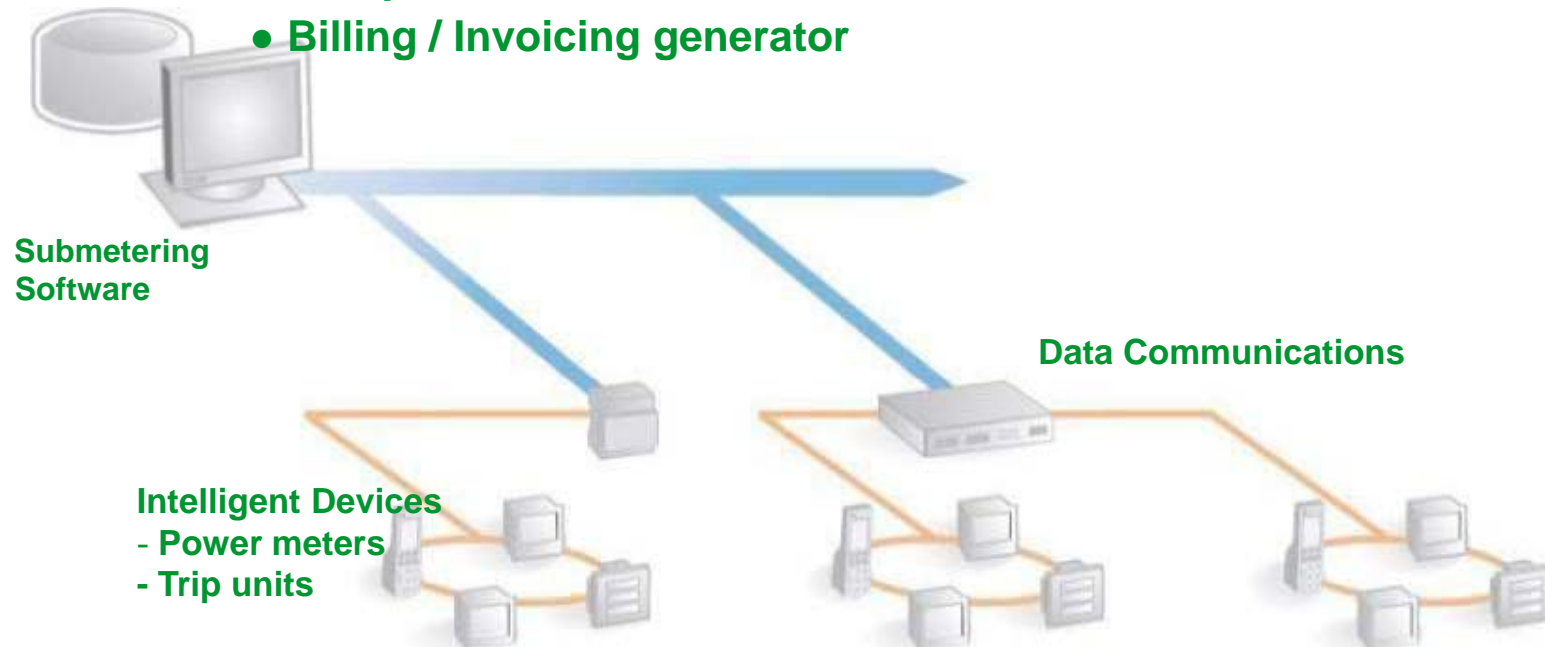
## ● Tenant Metering

- Real & reactive energy
- Comprehensive rate support
  - Flat & tiered rates
  - Demand & power factor
  - Seasonal rates
  - Time of Use
- Taxes & miscellaneous charges
- WAGES metering (Water, Air, Gas, Electric, Steam)

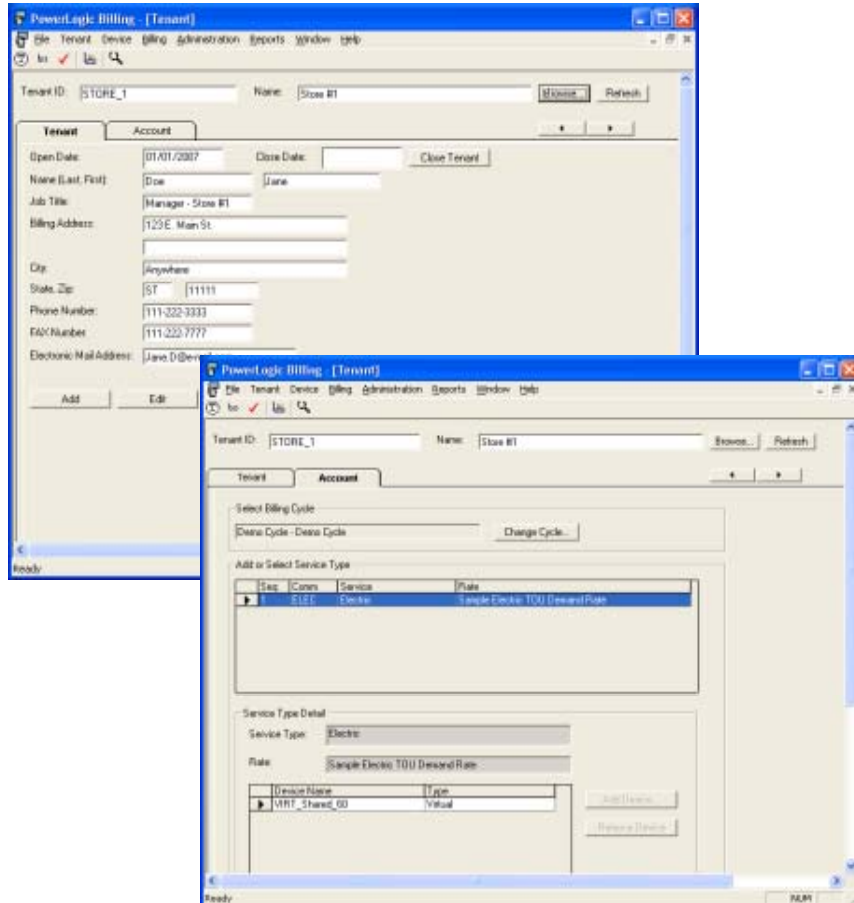


# Tenant Metering Software

- Automatic device detection for easy setup
- PC-based data logging + auto upload for devices with onboard logging
- ModbusTCP/IP (Ethernet) and ModbusRTU (RS485 serial) comms
- Tenant / account management
- Configurable billing cycles
- Comprehensive RateWizard™ tool
- Billing / Invoicing generator



# Tenant Metering Software

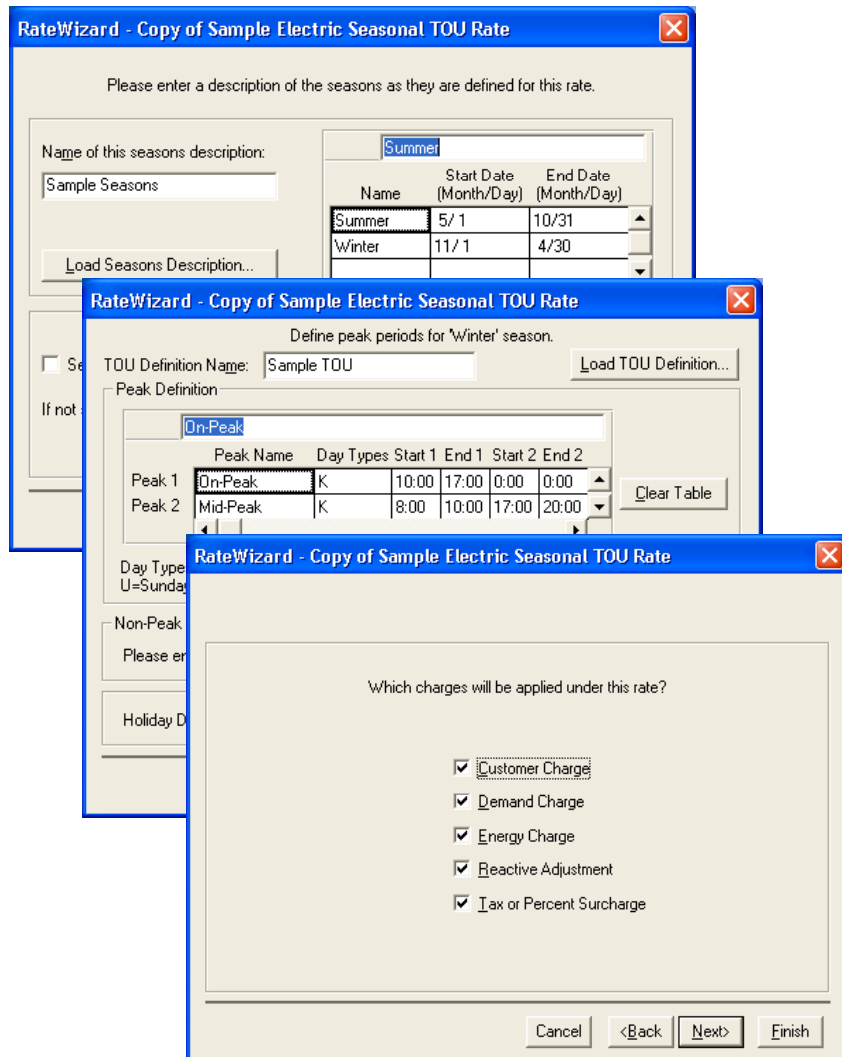


## • Billing Software Supports...

- Tenant and account management
- Tenant and account searches
- WAGES for multiple commodity billing
- Assignment of multiple meters to an account
- % allocation of meters to multiple accounts
- Single account for electric, gas, water, steam, & air devices

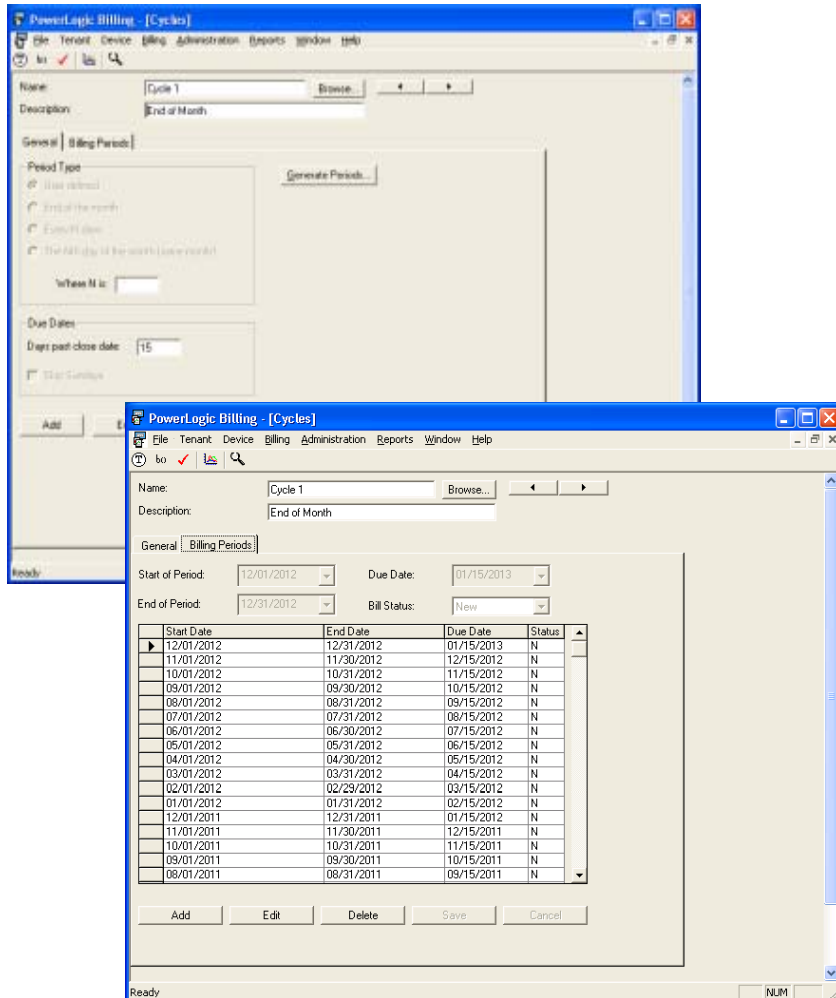


# Tariffs



- RateWizard® walks you through the steps of setting up a tariff
- Enter tariff information such as tariff name, utility (WAGES) type
- Choose the structure of the tariff
  - Seasonal
  - Time of Use
- Choose the charges in the tariff
  - Customer Charge
  - Demand
  - Energy
  - Power Factor
  - Taxes
- Default / sample rates provided

# Billing Cycles



- **User defined billing cycles**
  - Billing period start
  - Billing period end
- **Supports multiple billing cycles**
- **Default / sample billing cycles provided**

# Demand Charges

The image shows two overlapping screenshots of the 'RateWizard - Copy of Sample Electric TOU Demand Rate' software window. The top window is at step 1, 'Please define the DEMAND charge.', with 'Time-of-Use Charges' selected. The bottom window is at step 2, 'Please enter the DEMAND charge for each TOU period.', showing a table of charges per kW for On-Peak, Mid-Peak, and Off-Peak periods.

**RateWizard - Copy of Sample Electric TOU Demand Rate**

Please define the DEMAND charge.

1. Select the factors which will make up the DEMAND charge.

- Time-of-Use Charges
- Block Charges

2. Select the units of the

**RateWizard - Copy of Sample Electric TOU Demand Rate**

Please enter the DEMAND charge for each TOU period.

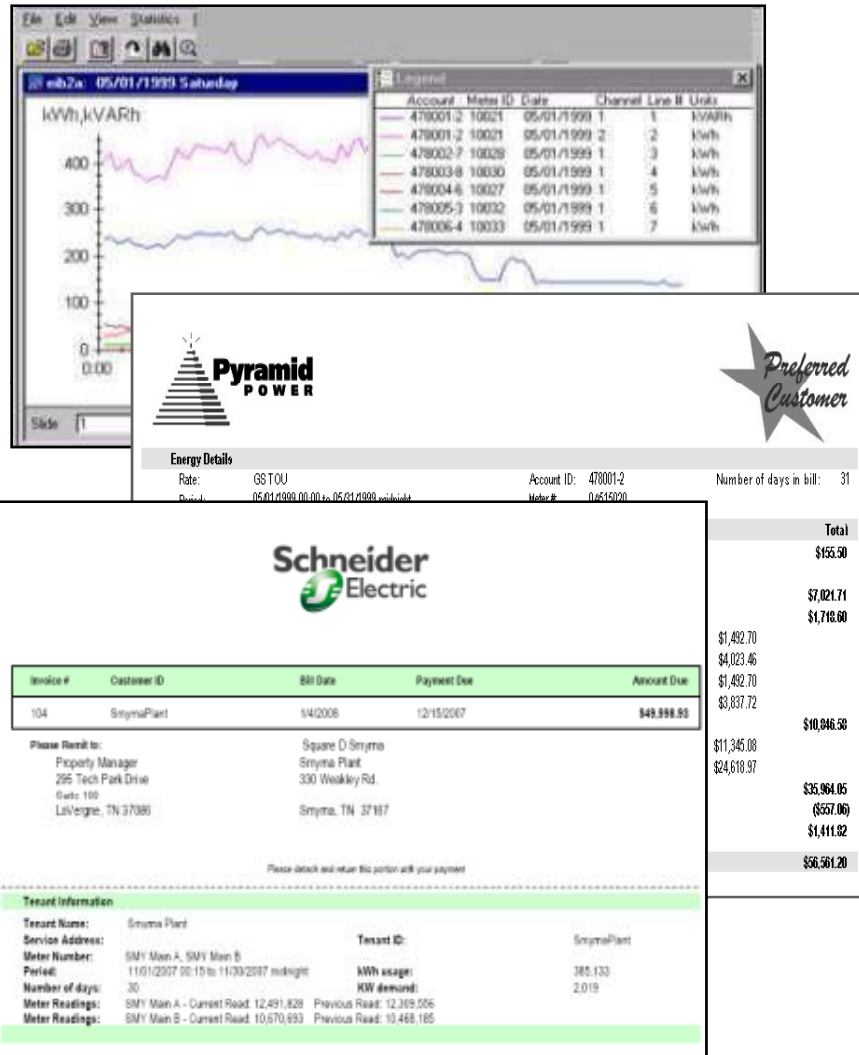
Charge is dollars per kW.

	Charge (\$)
On-Peak	5.00000
Mid-Peak	3.00000
Off-Peak	0.0000000

Buttons: Cancel, <Back, Next>, Finish

- Choose type of demand charge
  - Block & tiered
  - Time of Use
- Choose units for demand charges
  - kW
  - kVA
- Enter charges for each Time Of Use period

# Tenant Metering Software

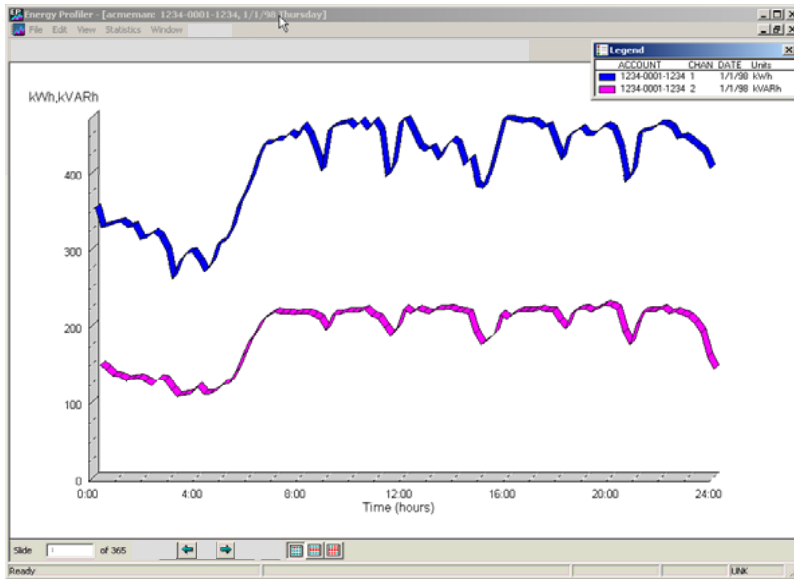


## • Billing processes allow for . . .

- Billing of multiple bill batches via user defined bill cycles
- Reviewing and correction of bills online before issuing to tenants
- Viewing load data associated with an invoice
- Invoicing via paper and/or PDF format
- Customizable logos & remit-to information

## • Five years of posted invoices are preserved

# Reporting - View Load Data

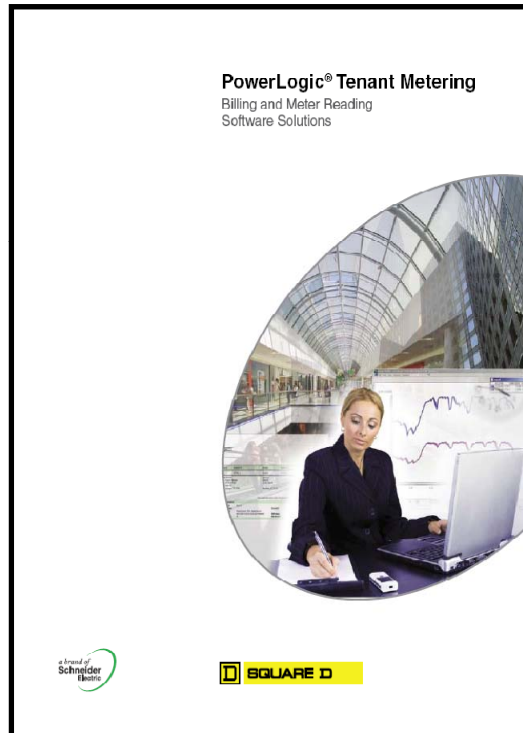


- One year of interval data is available for load profiles
- Load data can be viewed in a graphical chart . . .
  - Daily
  - Weekly
  - Monthly
- Statistical analysis of data provided

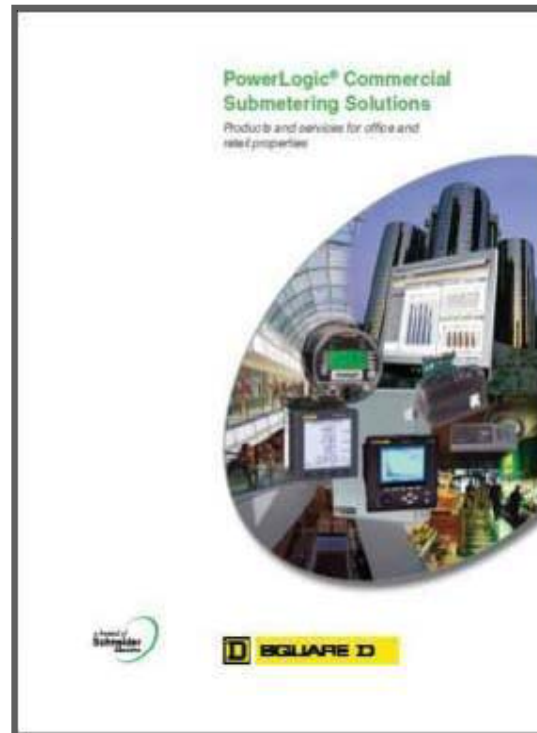
Statistics

Device.Chan	Total	Average	Peak	Peak Date	Peak Time	Min	Min Date	Min Time	Load Factor
VIRT_Shared_60.1	217951 kWh	292.94 kW	971.45 kW	05/17/2007	11:45	63.994 kW	05/15/2007	02:30	0.3016

# Submetering Brochures



3000BR0709



3000BR0703



3000BR0705